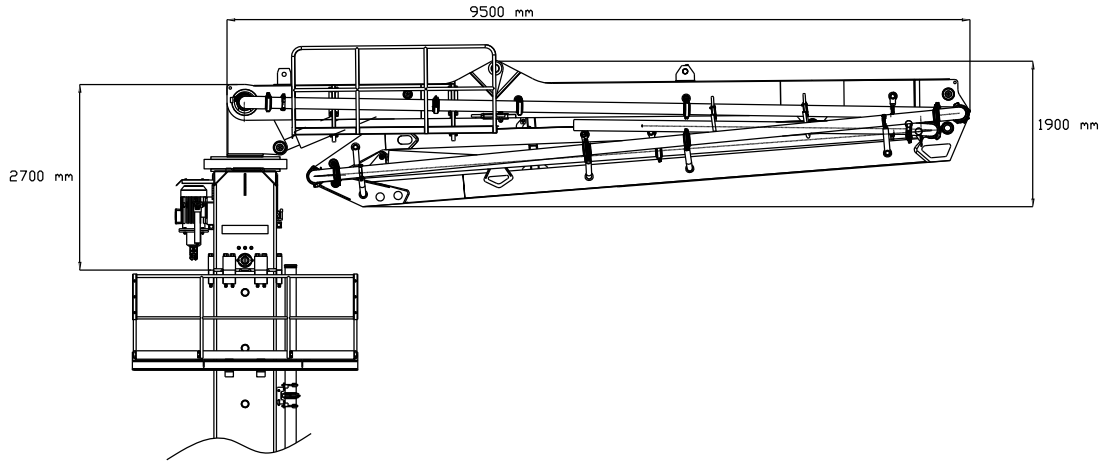


**BSD 24 – 3RT**



**Boom System**

Boom Type	: 3RT
Sections	: 3
Boom Swing Speed	: 113 sec
Boom Swinging Angle	: 365°
Concrete Pipe Diameter	: 125 mm
Detachable Boom Weight (TW)	: 6,360 kg
(1st.section)	: 3,700 kg
(2nd. section)	: 2,660 kg
Column Support Frame	: 1,300 kg
Drive	: 15 kW Hydraulic-Electric Motor

**Standart Equipments**

- Wireless Remote Control
- 1 x 10 m Square Column(3580 hg)
- 1 x 6 m Square Column (2400 kg)
- 1 x Working Platform
- 3 x Floor Frames
- 1 x Hydraulic Climbing Apparatus
- 1 x Heavy duty Spanner set
- 4 x 2 m Ladder Units (1 ladder unit per 2 m distance)

**Optional**

- 1 unit of transversal leg foundation base + anchorage bolts

**Diagrams**

